

## How do I connect to Wi-Fi using a MacBook

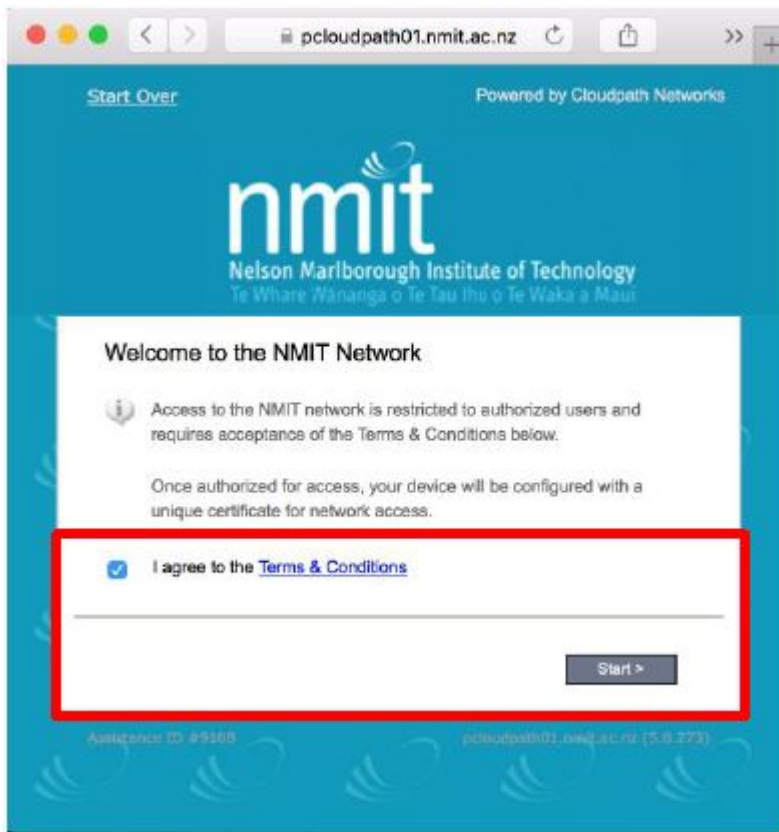
helpdesk@nmit.ac.nz - 2025-06-06 - Connecting to WiFi

### How do I connect to Wi-Fi using a MacBook

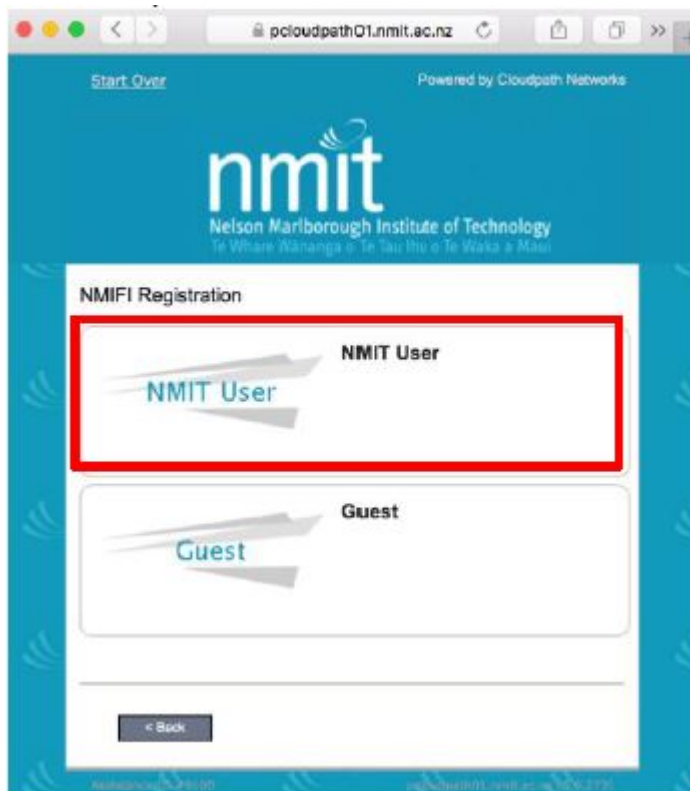
1. Connect your device to **NMIT-wireless**



2. Open a web browser (Safari, Firefox or Google Chrome) and browse to any web page. (nmit.ac.nz), if this does not redirect you to <https://pcloudpath01.nmit.ac.nz/> then you will need to type the address in your browser. Read and agree to the terms and conditions and if you agree check the box and click on **Start**



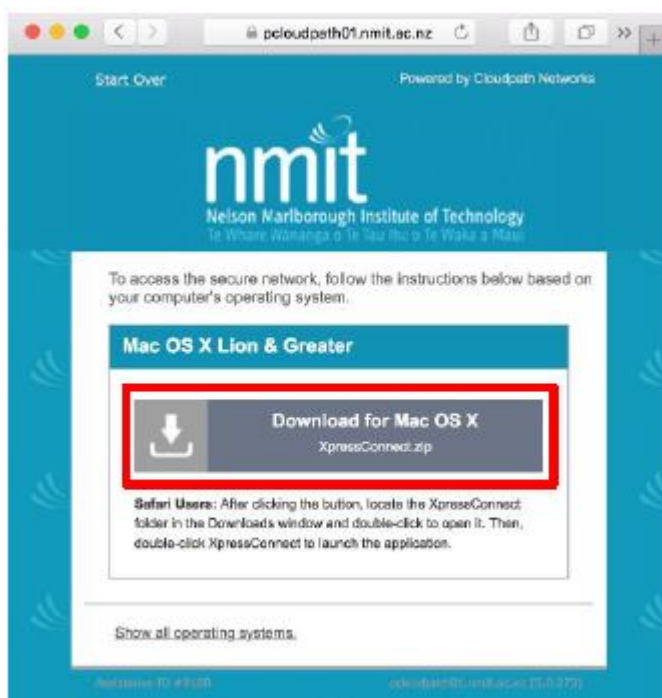
### 3. Select **NMIT User**



4. The NMIT User option will ask you to provide your **NMIT username** and **Password** (The format of the username is: - Student: firstname-lastname | Staff: firstname.lastname), enter them and click **Continue**



5. The correct username and password will take you to the XpressConnect download page, click **Download for Mac OS X**

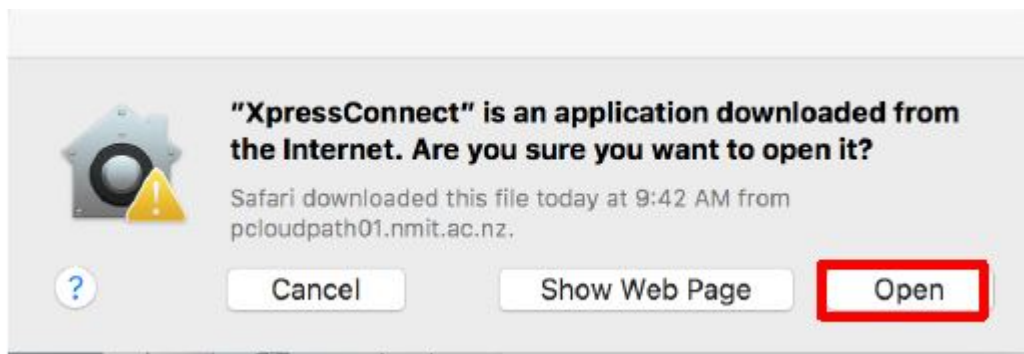


6. Open the XpressConnect application once the download is complete. (Double click on the

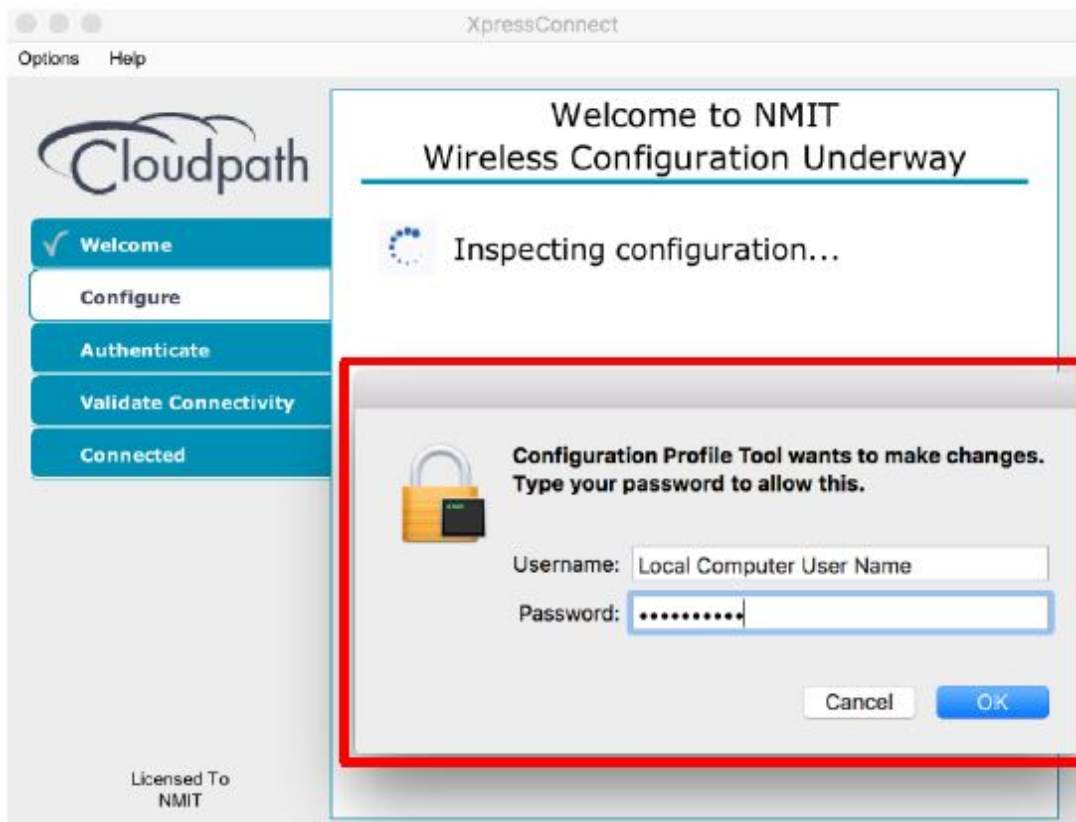
XpressConnect application file)



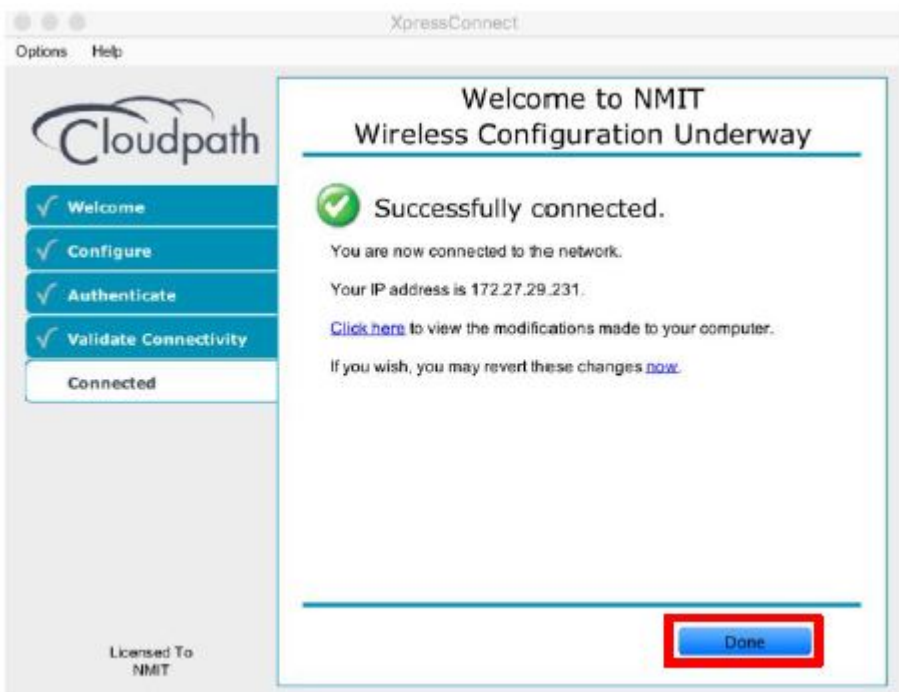
7. Allow the XpressConnect application to **Open**



8. The XpressConnect application will go through the steps to install itself. You will be prompted to provide your local username and password (possibly more than once) to make these changes to your MacBook. (Your NMIT credentials are not needed here)



9. Once the XpressConnect has made the changes you will be shown a **Successfully connected** box. Click **Done**.



10. If you check your wireless connections you should now be connected to the **NMIT-BYOD** network

