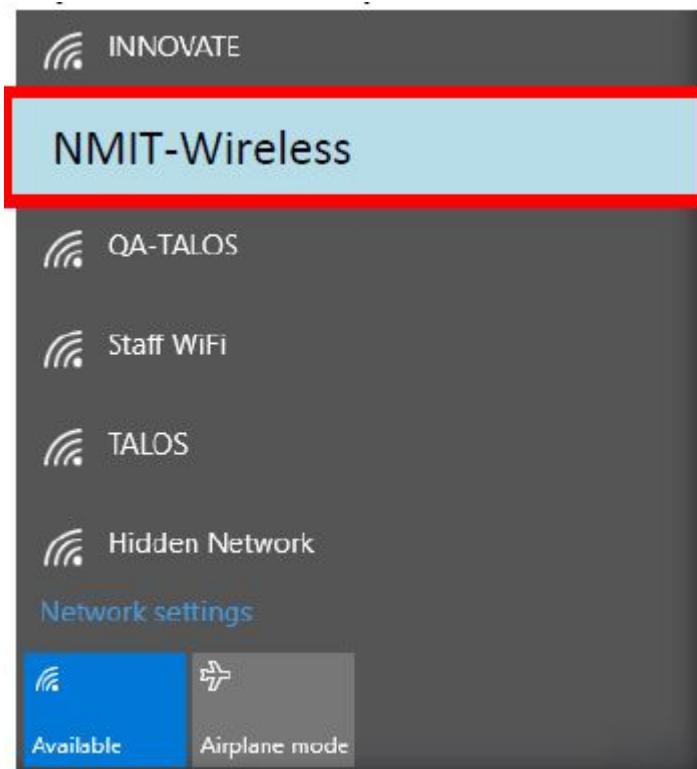


How do I connect to Wi-Fi on a Windows Laptop or Tablet?

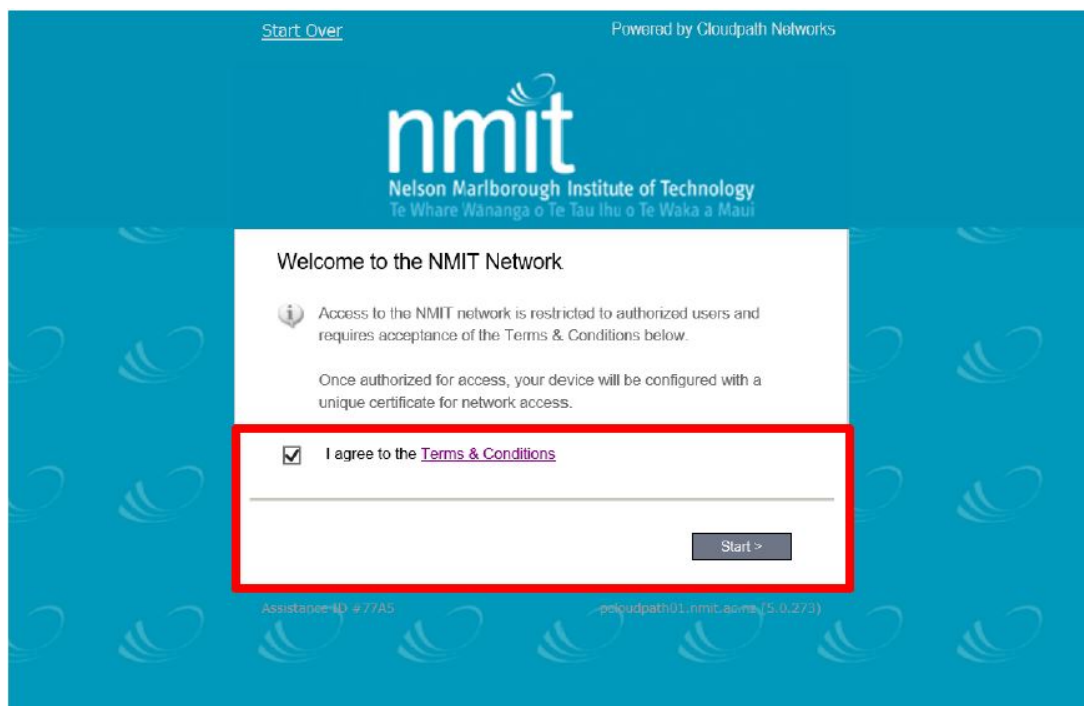
helpdesk@nmit.ac.nz - 2025-06-06 - Connecting to WiFi

How do I connect to Wi-Fi on a Windows Laptop or Tablet

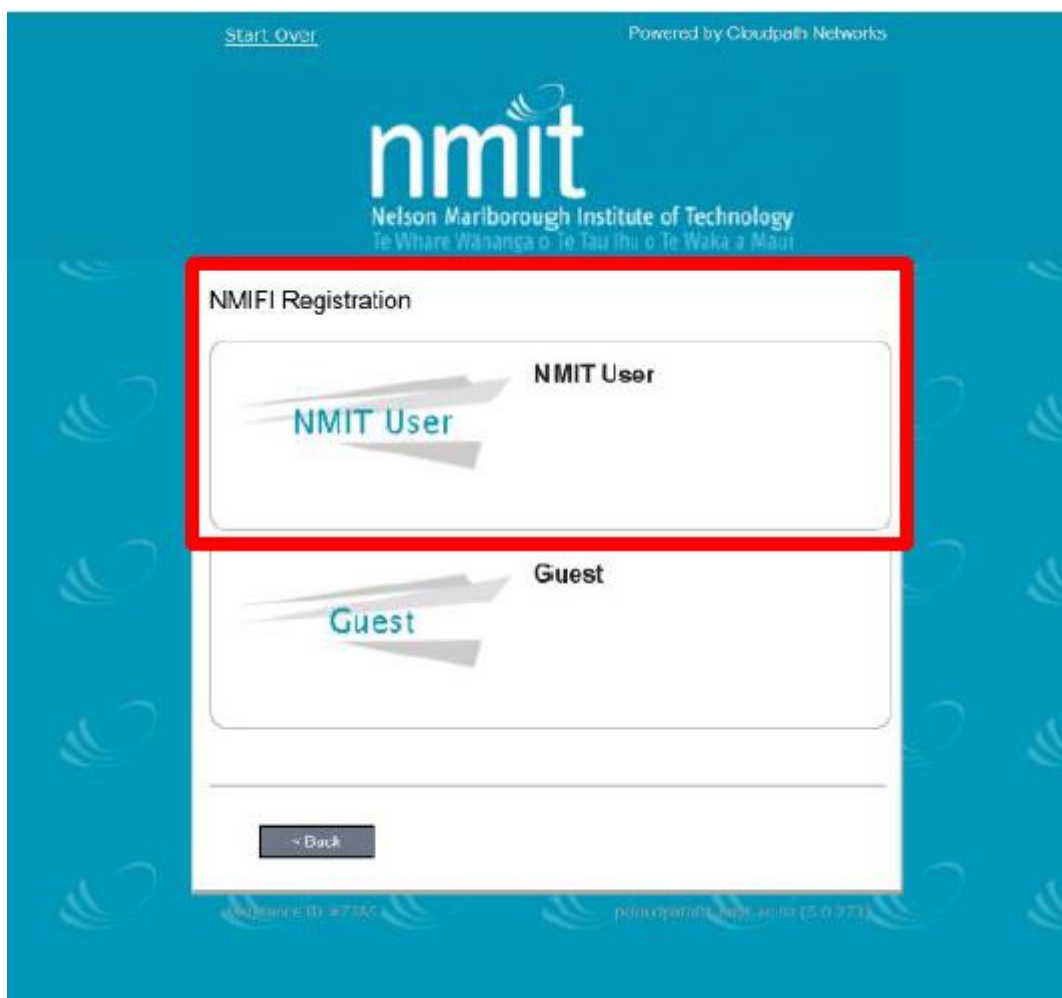
1. Connect your device to **NMIT-Wireless**



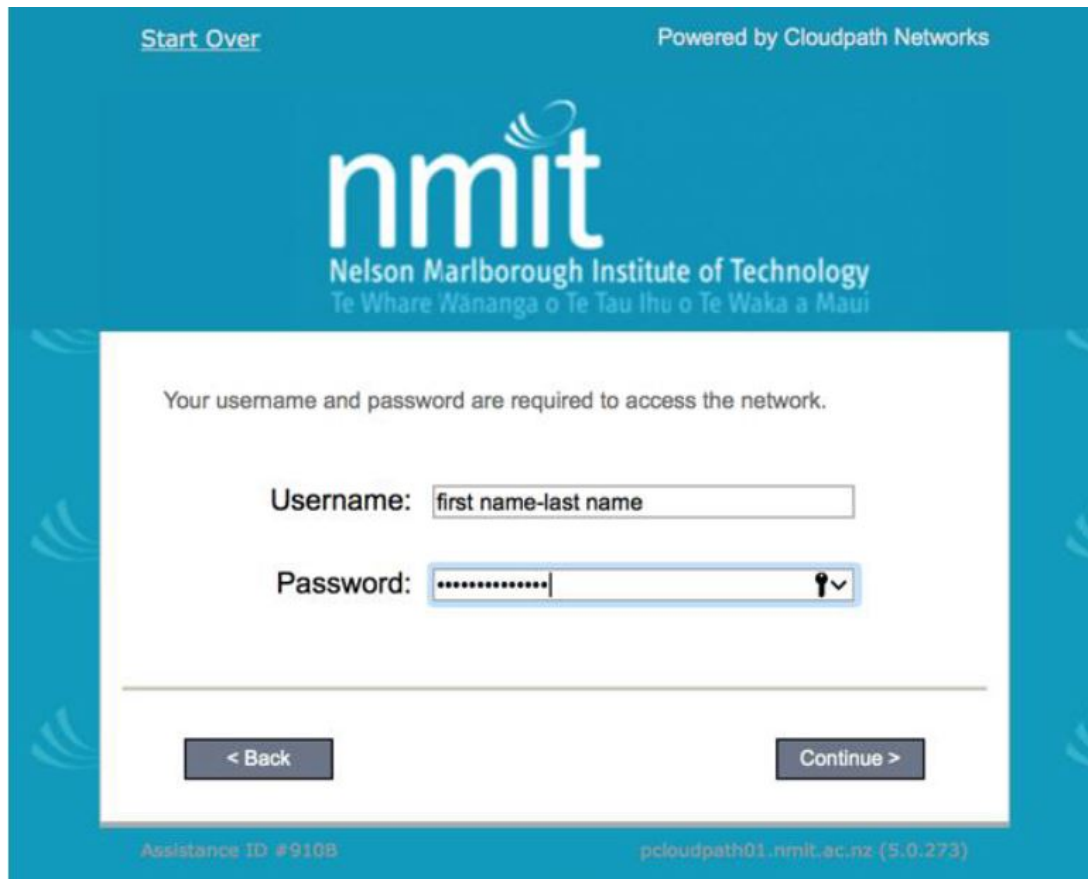
2. Open Internet Explorer or Google Chrome and browse to any web page. (nmit.ac.nz), if this does not redirect you to <https://pcloudpath01.nmit.ac.nz/> then you will need to type the address in your browser. Read and agree to the terms and conditions and if you agree with it check the box and click on **Start**



3. Select **NMIT User**




4. The NMIT User option will ask you to provide your **NMIT Username** and **Password** to continue. (Format of the username – Student: **First-Lastname** Staff: **First.Lastname**)



The image shows a login interface for the Nelson Marlborough Institute of Technology (NMIT). The background is blue with the NMIT logo and name. The login form is white and contains the following elements:

- Start Over** (link) and **Powered by Cloudpath Networks** (text) at the top.
- nmit** logo and **Nelson Marlborough Institute of Technology** text, with the Māori name **Te Whare Wānanga o Te Tau Ihu o Te Waka a Maui** below it.
- A message: **Your username and password are required to access the network.**
- Username:** A text input field with the placeholder text **first name-last name**.
- Password:** A password input field with a masked password (dots) and a toggle icon (key and eye) to show/hide the password.
- < Back** and **Continue >** buttons at the bottom of the form.
- At the bottom of the page, there is a footer with **Assistance ID #9108** and **pcloudpath01.nmit.ac.nz (5.0.273)**.

5. As long as you have entered the correct username and password you will be taken to the below page, click **Download for Windows**.



The image shows a web page for NMIT (Nelson Marlborough Institute of Technology). At the top, the NMIT logo is displayed with the text "Nelson Marlborough Institute of Technology" and "Te Whare Wānanga o Te Tau Ihu o Te Waka a Maui". Below the logo, a message states: "To access the secure network, follow the instructions below based on your computer's operating system." A section titled "Microsoft Windows" contains a button labeled "Download for Windows" with a download icon and the filename "NetworkWizardLoader-2e93d2d1.exe". Below this button, instructions read: "After downloading, go to your desktop or downloads folder and open the file 'NetworkWizardLoader-2e93d2d1.exe'." and "If you prefer and your browser supports it, you may launch via [Java Applet](#) or [ActiveX](#)." At the bottom of the section is a link "Show all operating systems." The footer of the page includes "Assistance ID #6A32" and "pcloudpath01.nmit.ac.nz (5.0.273)".

NMIT
Nelson Marlborough Institute of Technology
Te Whare Wānanga o Te Tau Ihu o Te Waka a Maui

To access the secure network, follow the instructions below based on your computer's operating system.

Microsoft Windows

 **Download for Windows**
NetworkWizardLoader-2e93d2d1.exe

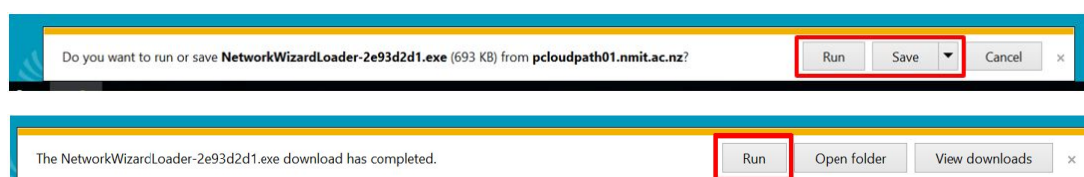
After downloading, go to your desktop or downloads folder and open the file "NetworkWizardLoader-2e93d2d1.exe".

If you prefer and your browser supports it, you may launch via [Java Applet](#) or [ActiveX](#).

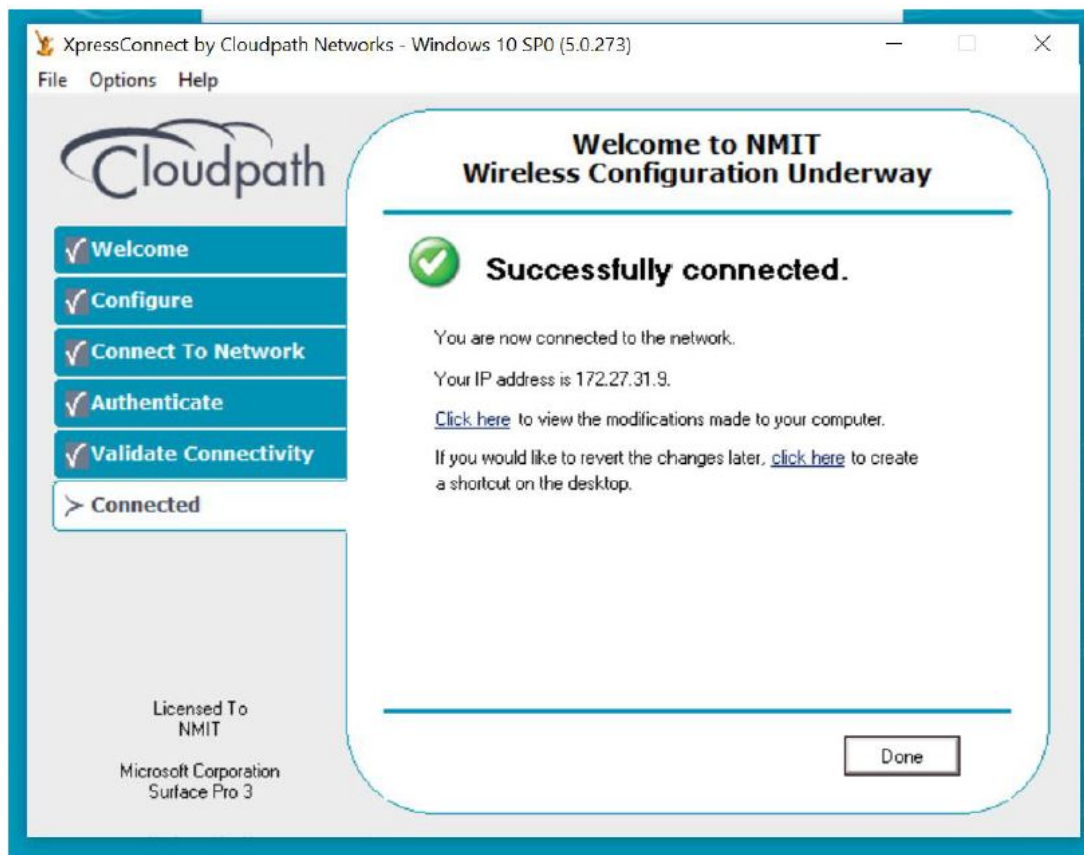
[Show all operating systems.](#)

Assistance ID #6A32 pcloudpath01.nmit.ac.nz (5.0.273)

6. There will be a prompt within your web browser to run the NetworkWizardLoader.exe from pcloudpath01.nmit.ac.nz. Select **Run**. If you select Save, the file will be downloaded and you will need to select **Run** once it is completed.



7. The XpressConnect application will go through the steps to install the wireless configuration automatically.



You will now be connected to NMIT-BYOD, and will be able to browse the Internet